

2010

Evergreen Power Limited
**Solar LED Street
Lighting System**

Your Valued Solar Partner



Solar LED Street Lighting

EVERGREENPOWER LIMITED (EPL) is Asia's leading designer, manufacturer and supplier of solar power system and products. EPL is a Sino-Singapore solar company based in Hong Kong. Our objective is to deliver cost-effective green energy to our partners and customers. Over these years, the company has acquired strong technical expertise and experience working closely with agencies and solar distributors in Asia, Europe and Africa. We do so by knowing and understanding our clients to develop close relationship based on trust and partnership. We pride ourselves on maintaining strict quality assurance on each and every of our products. With thousands of systems sold and installed and no outstanding warranty claim. EPL is your valued partner in solar.

EPL Solar Street Light

Our solar street lighting solutions are ideal for main streets, rural roads, factory compounds, housing estates and other common areas for high brightness illumination. Designed to operate as one integrated system, this system includes the solar power, storage and management (solar panels, battery & controller) as well as the light itself, support frame & weatherproof housing. Our range of solar street and areas lighting systems require no electricity line extensions and are maintenance-free, making them ideal for locations where utility power is unavailable or uneconomic. All our solar street lights can be configured to turn on and off automatically between dusk and dawn or at pre-defined hours while auxiliary battery ensures continuous operation for up to FIVE days even in bad weather condition.

✱ LEDs are practically unbreakable and non-toxic with over 60,000hrs lifetime

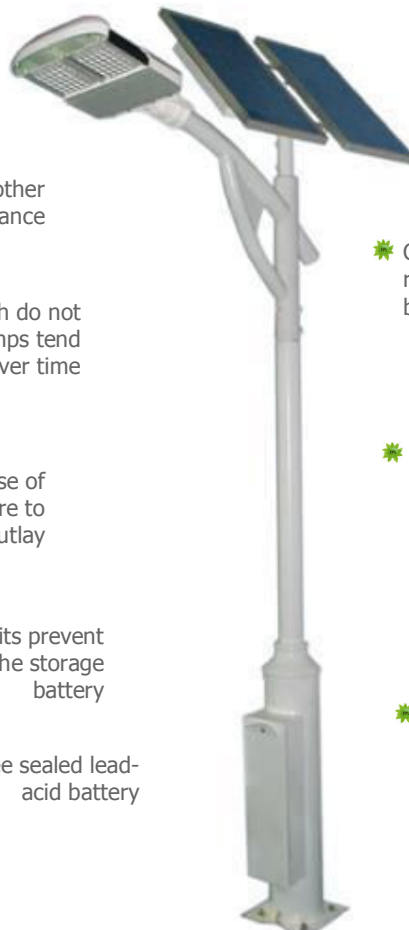
✱ In case one LED do not function, all other LED continues to light without hindrance

✱ Highly durable LED output which do not depreciate while traditional sodium lamps tend to lose their luminous efficiency over time

✱ Modular design to make use of existing lamp pole or structure to reduce capital outlay

✱ Built-in protection circuits prevent overcharging and discharging of the storage battery

✱ Maintenance-free sealed lead-acid battery



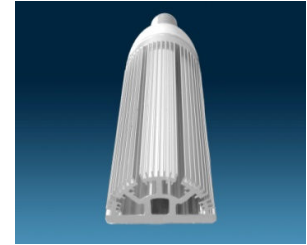
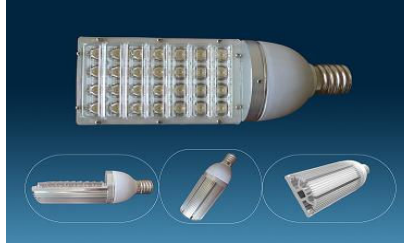
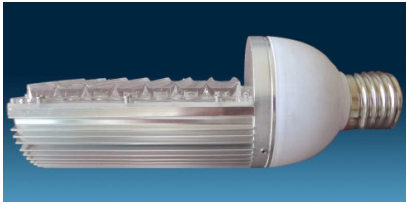
✱ Uses only high efficiency >14% crystalline PV module

✱ Continue functioning even in cloudy, raining weather conditions and power black-out- up to five days

✱ Aesthetically designed and weatherproof suitable for all climates ranging from -30°C ~ 40°C , humidity: 0~95%

✱ Manufactured using imported US-made, high-efficiency LED – longer lifetime, lesser energy and higher illumination than conventional lamp

Solar Walkway Lighting



E40 LED Street Light Technique Data	
Type	GLC-LD06 (E40)
Net Weight	1.15KG
Specifications	265×90×90(mm)
Interface	E40
Light Source Power	28W
Light Efficiency	≥85LM/W
Color temperature	3000K-3500K warm white 4000K-5000K white by yellow 5500K-6500K cold white
Input Voltage	AC175V ~ 265V
Input Frequency	50 ~ 60HZ
Output Current	320 ~ 330mA
Driving Power Factor	>0.90
Driving Power Transformation Efficiency	>85%
Light Angle : Horizontal	Horizontal: 135degree, Vertical: 77degree
Luminous Decay	(within 1000hs) < 4.3%
Life Span	> 60000hs
Light Spot Shape	Rectangle Facula
Working Temperature Scope	-30℃ ~ 50℃
Storage Temperature Scope	-20℃ ~ 60℃
Light Source Luminous Flux	>2100LM
Radiation Range	6M : 24M×12M
	8M : 32M×14M
Luminance	6M : >20LUX
	8M : >10LUX

- Street lights of this type adopt E40 light port structure which means they can be used with the traditional street lamp shell. The conventional lamp unit can be directly replaced this model.
- Suggesting Installation Height: 6—8 meters

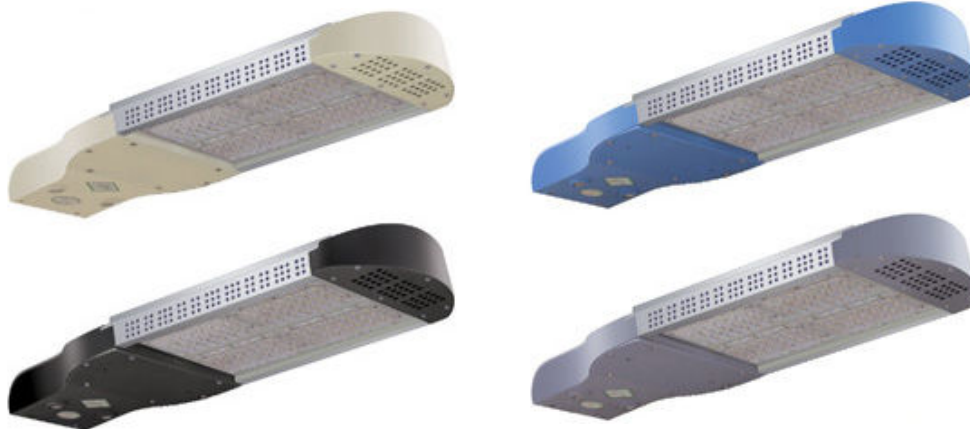
Solar LED Street Lighting

Technical Specification				
Model	GLC-LD01			
Specifications	558×285×80(mm)			
Net Weight	6.9kg			
LED Total Power	28W	40W	48W	56W
Input Total Power	32W	44W	52W	64W
Luminance (LUX) Vertical	6m	18	20.5	23
	8m	10	11	13.2
	10m	6	7	7.5
	12m			
	14m			
Luminous Flux(lm)	3113	3232	3880	4525
Illuminated Area	6 meters- 26×12 8meters- 36×14 10meters- 42×16 12meters- 48×18			
Input Voltage	AC84V-264V and DC9V-30V			
Luminance uniformity	>0.6			
Power efficiency	≥92%			
Current	Single 325mA			
LED Single Power	1W			
Color Temperature	3000K-3500K warm white 4000K-5000K white by yellow 5500K-6500K cold white			
LED Single efficiency	≥90LM/W			
Lamp Temperature	<50°C			
Idemitsu Perspective	Horizontal: 140; Vertical: 77			
Efficiency	>90%			
Power Factor	>0.99			
Protection Grade	IP65			
Facula Shape	Zoster Facula			



Solar LED Street Lighting

Technical Specification			
Model	GLC-LD02		
Specifications	709×285×80(mm)		
Net Weight	9kg		
LED Total Power	80W	96W	112W
Input Total Power	92W	110W	131W
Luminance (LUX) Vertical	6m	42.6	52
	8m	23.5	26
	10m	14.5	16
	12m	12	14.3
	14m		
Luminous Flux(lm)	6218	7461	8705
Illuminated Area	6 meters: 26×12 8meters: 36×14 10meters: 42×16 12meters: 48×18		
Input Voltage	AC84V-264Vand DC9V-30V		
Luminance uniformity	>0.6		
Power efficiency	≥92%		
Current	Single 325mA		
LED Single Power	1W		
Color Temperature	3000K-3500K warm white 4000K-5000K white by yellow 5500K-6500K cold white		
LED Single efficiency	≥90LM/W		
Lamp Temperature	<50℃		
Idemitsu Perspective	Horizontal: 140; Vertical: 77		
Efficiency	>90%		
Power Factor	>0.99		
Protection Grade	IP65		
Facula Shape	Zoster Facula		



Technical Specification				
Model		GLC-LD03		
Specifications		860×285×80(mm)		
Net Weight		10kg		
LED Total Power		120W	144W	168W
Input Total Power		134W	166W	196W
Luminance (LUX) Vertical	6m			
	8m	37.3	44.5	54
	10m	23	25.5	35
	12m	16	186.4	22
	14m	13.5	16.4	18
Luminous Flux(lm)		9068	10882	12696
Illuminated Area		6 meters: 26×12 8meters: 36×14 10meters: 42×16 12meters: 48×18		
Input Voltage		AC84V-264Vand DC9V-30V		
Luminance uniformity		>0.6		
Power efficiency		≥92%		
Current		Single 325mA		
LED Single Power		1W		
Color Temperature		3000K-3500K warm white 4000K-5000K white by yellow 5500K-6500K cold white		
LED Single efficiency		≥90LM/W		
Lamp Temperature		<50°C		
Idemitsu Perspective		Horizontal: 140; Vertical: 77		
Efficiency		>90%		
Power Factor		>0.99		
Protection Grade		IP65		
Facula Shape		Zoster Facula		



